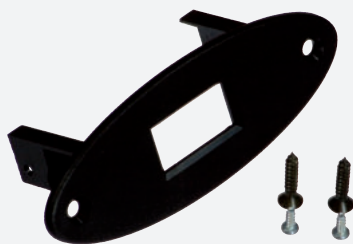
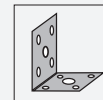


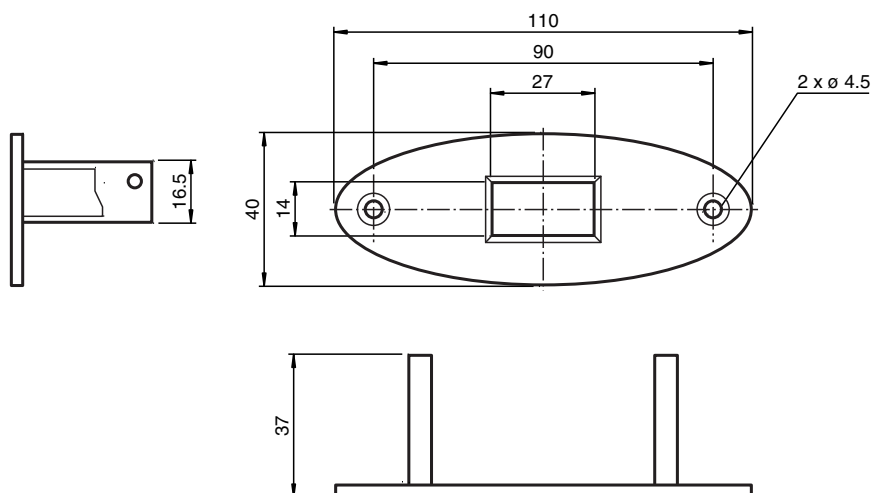
Mounting aid DGE Flush Mounting PIR20



■ Simple mounting

Flush-mounted frame for sensors in the PIR20

Dimensions



Technical Data

General specifications

Setting angle 0 °

Mechanical specifications

Material black ABS

Mass approx. 11 g

Technical Data

Dimensions	110 mm x 40 mm x 37 mm	
Mounting		Mounting accessories included
Suitable series		
Series		PIR20

Release date: 2020-03-23 Date of issue: 2020-10-08 Filename: 203967_eng.pdf

Flush mounting



1. Insert the sensor into the brackets.
2. Use the provided screws (2.9 mm x 6.5 mm) for fixing the sensor.
3. Integrate the mounted sensor into the hole with dimensions **77 mm x 29 mm** and fixing with provided screws.